



**Faculty of Civil  
Engineering**

WARSAW UNIVERSITY OF TECHNOLOGY

# CIVIL ENGINEERING STRUCTURES (CES)

**April 2026**

**Warsaw University  
of Technology**



# CES – CIVIL ENGINEERING STRUCTURES

- **Design of reinforced concrete, metal, and composite structures:**
  - buildings, industrial structures, special structures
  - computer aided design (Robot, Consteel, BIM, ...)
- **Construction and prefabrication processes**
- **Modernisation & repair**

**Theoretical and practical knowledge**  
**→ More job opportunities**



# CES – PROGRAMS OFFERED

## • Undergraduate Studies, BSc

### - Sem VII :

- Concrete Structures III (60h)
- Metal Structures III (60h)
- Building Physics (30h)
- Architecture and Urban Planning (45h)
- Computer Methods in Civil Engineering (45h)
- 3 Elective Courses (90h)

### - Sem VIII :

- Student internships
- Diploma Seminar
- BSc Thesis

## • Graduate Studies, MSc

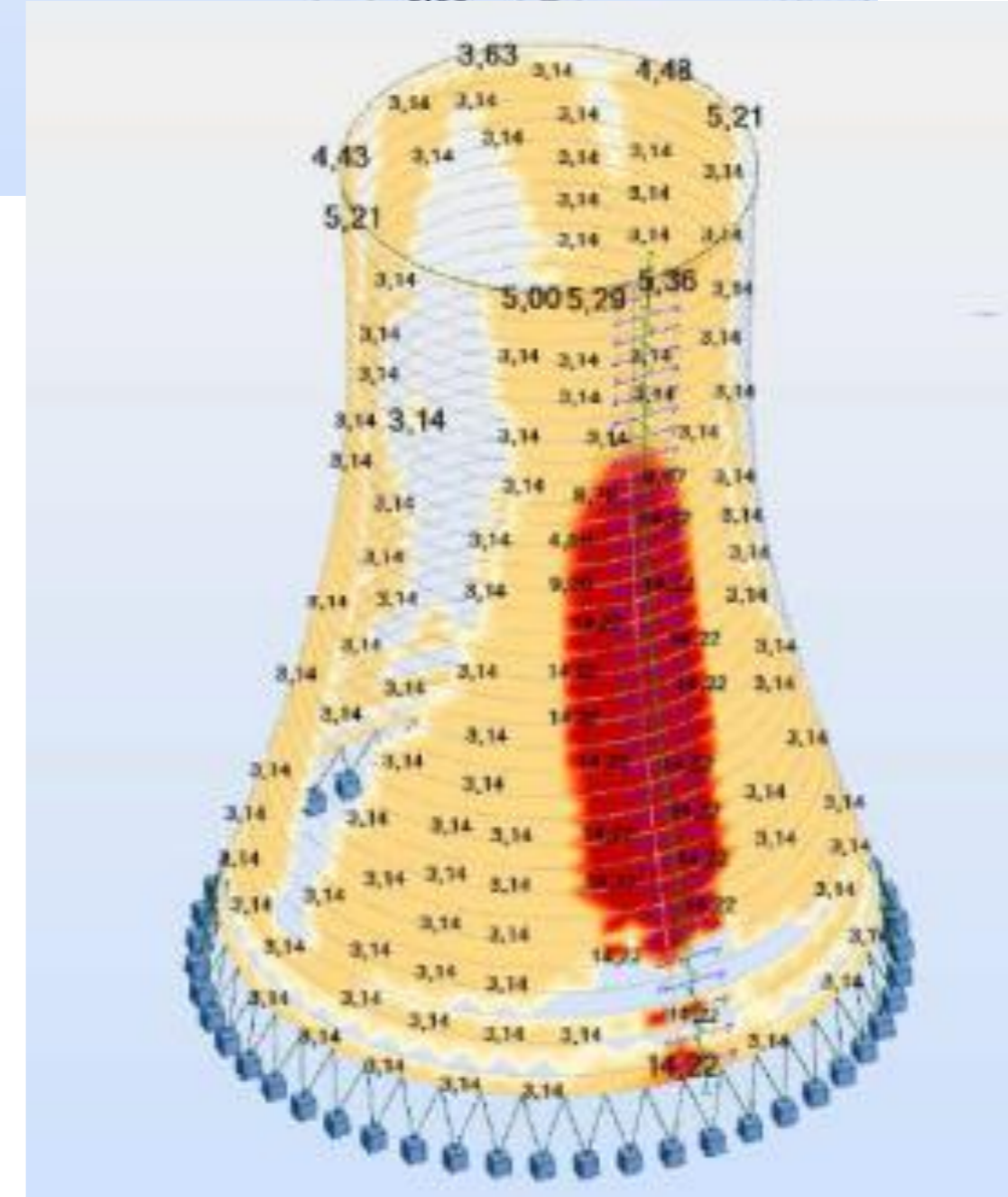
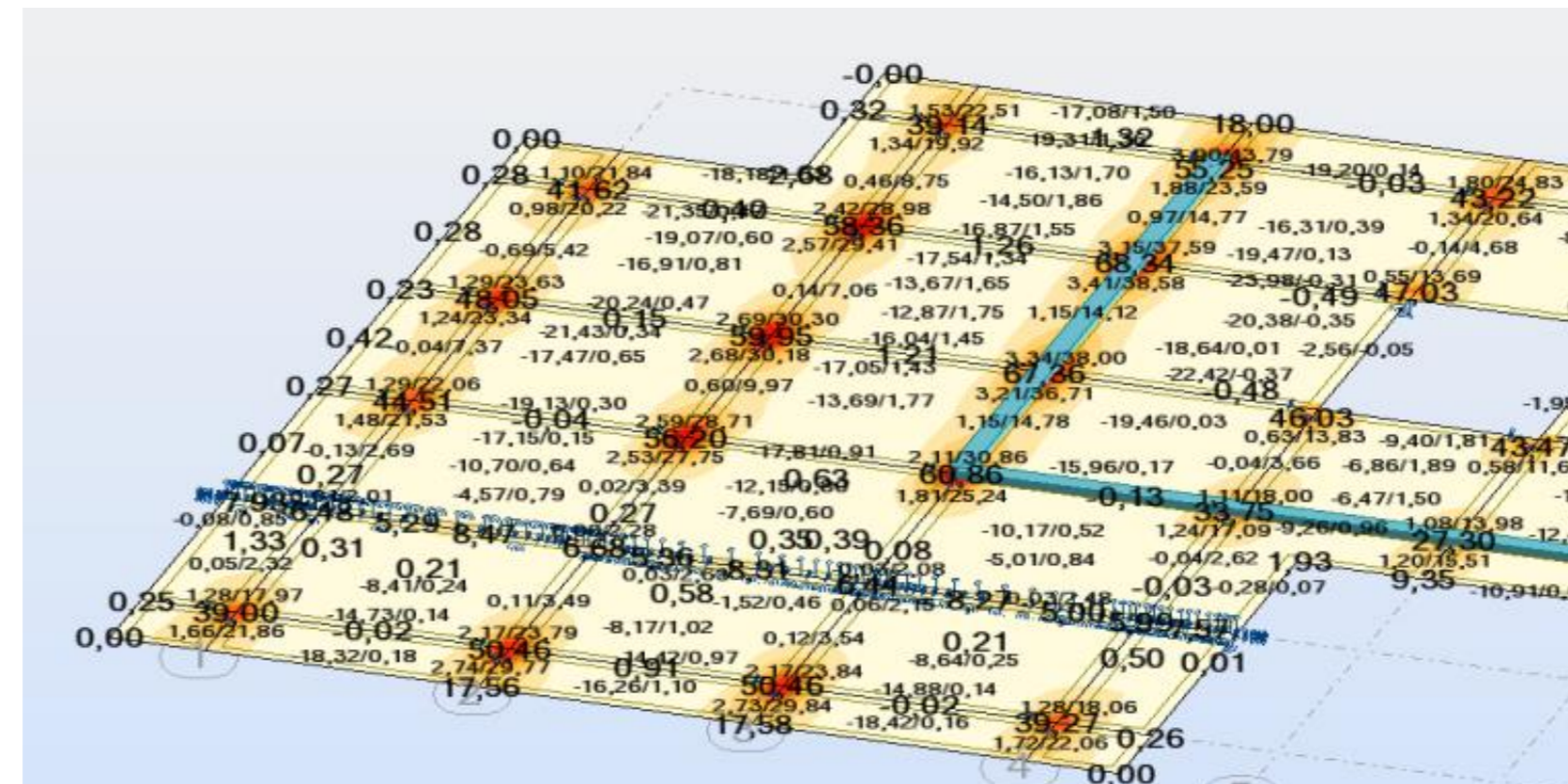
**Warsaw University  
of Technology**



# DIVISION OF CONCRETE STRUCTURES

## THE SCOPE OF COURSES AND DIPLOMA THESES

- Reinforced Concrete Structures
- Prestressed Concrete Structures
- Composite Structures
- Prefabricated Structures



# DIVISION OF CONCRETE STRUCTURES

## CONSTRUCTION SITE VISITS



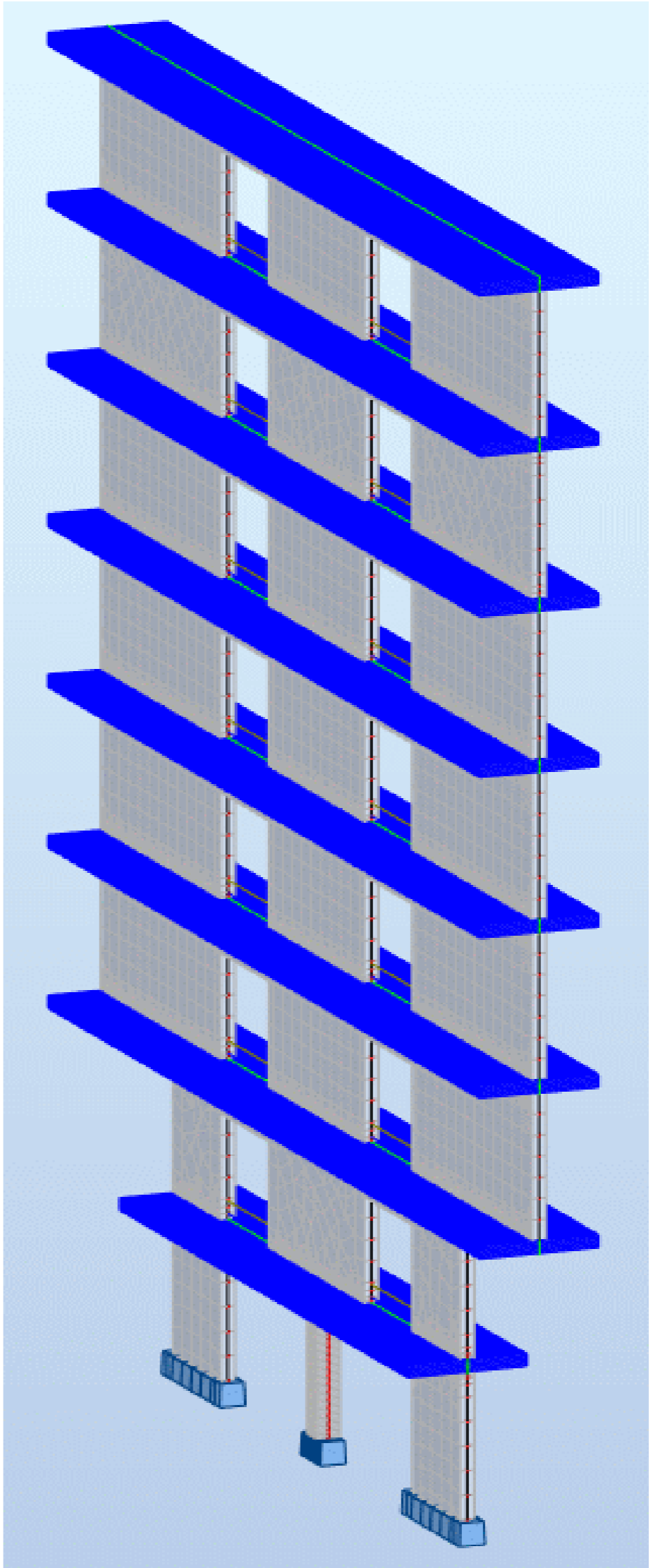
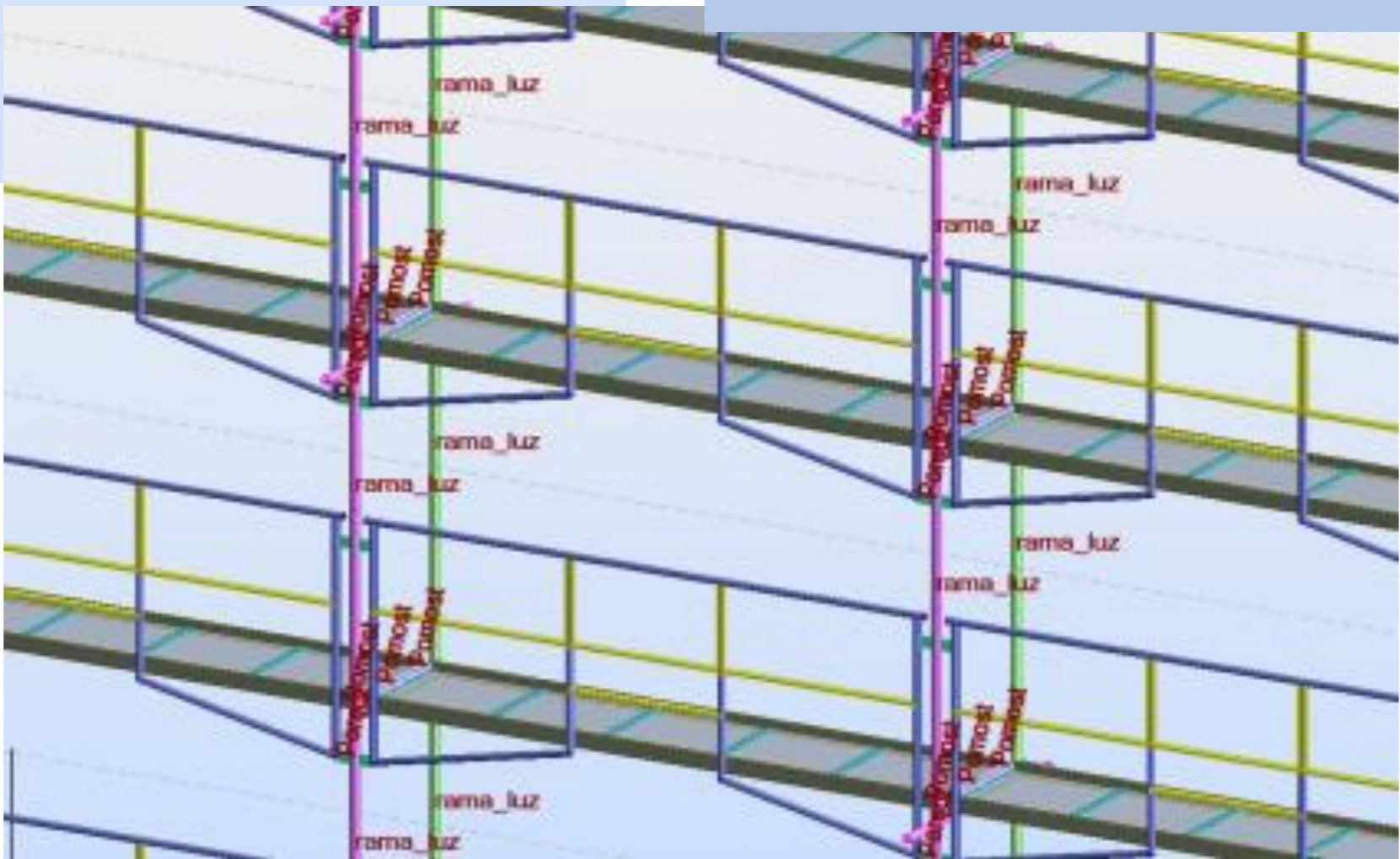
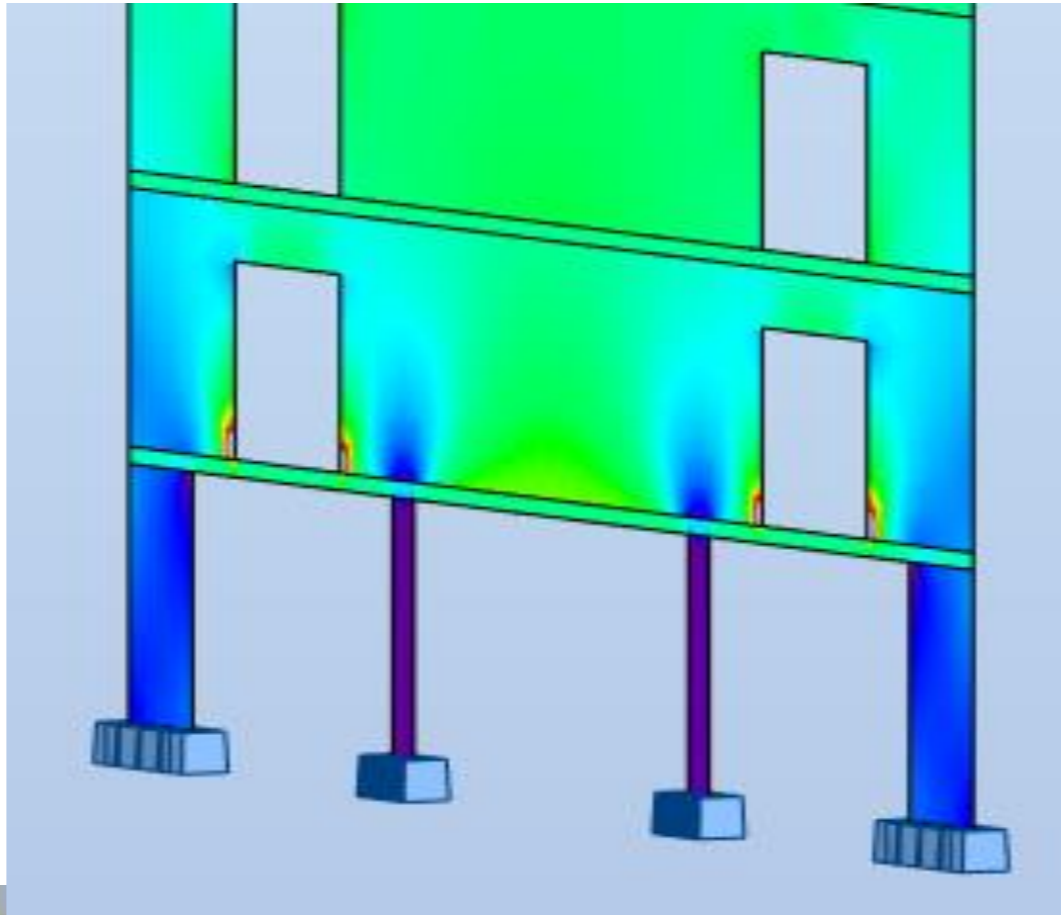
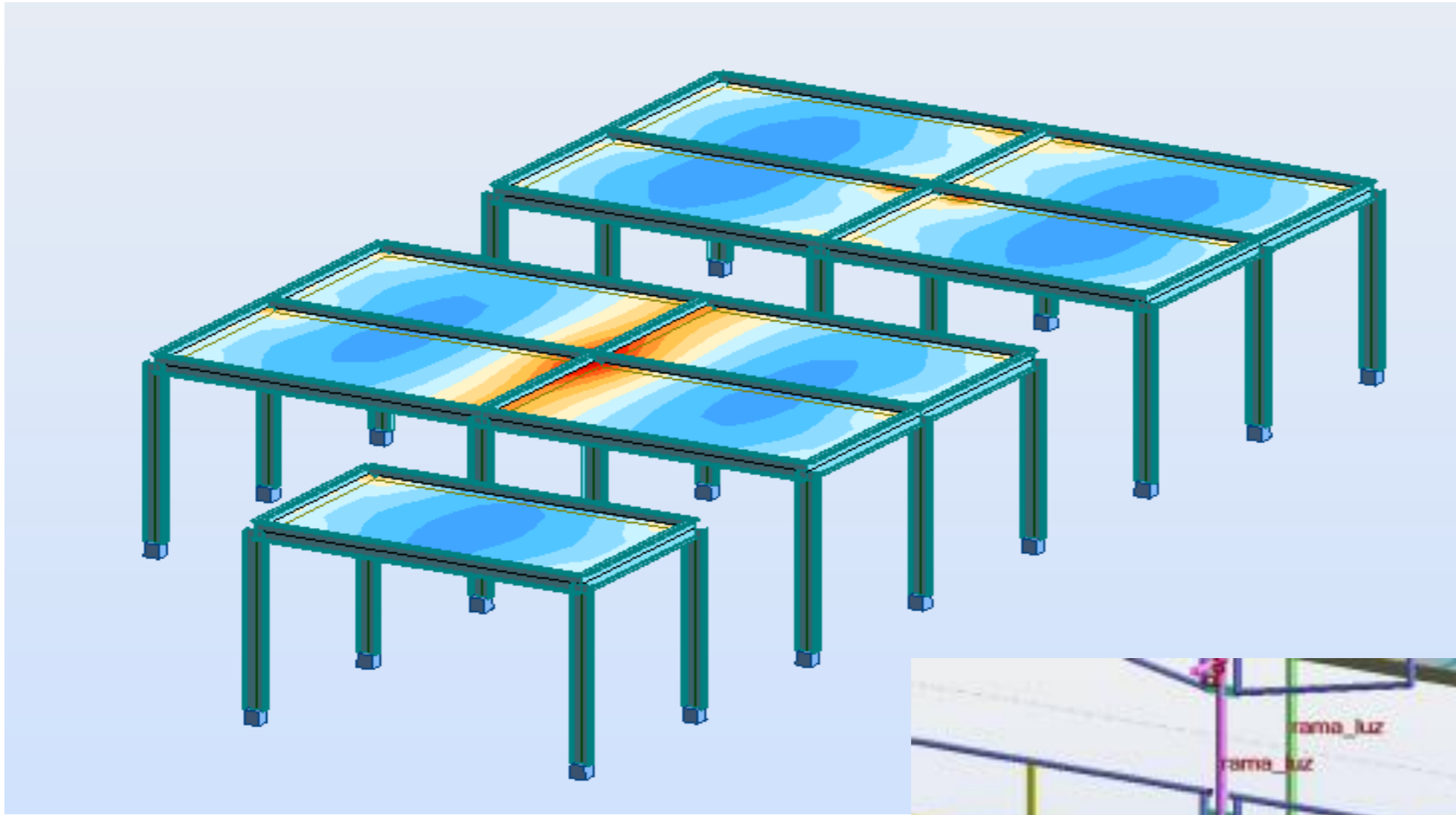
**Warsaw University  
of Technology**



# DIVISION OF CONCRETE STRUCTURES

## ELECTIVE COURSES

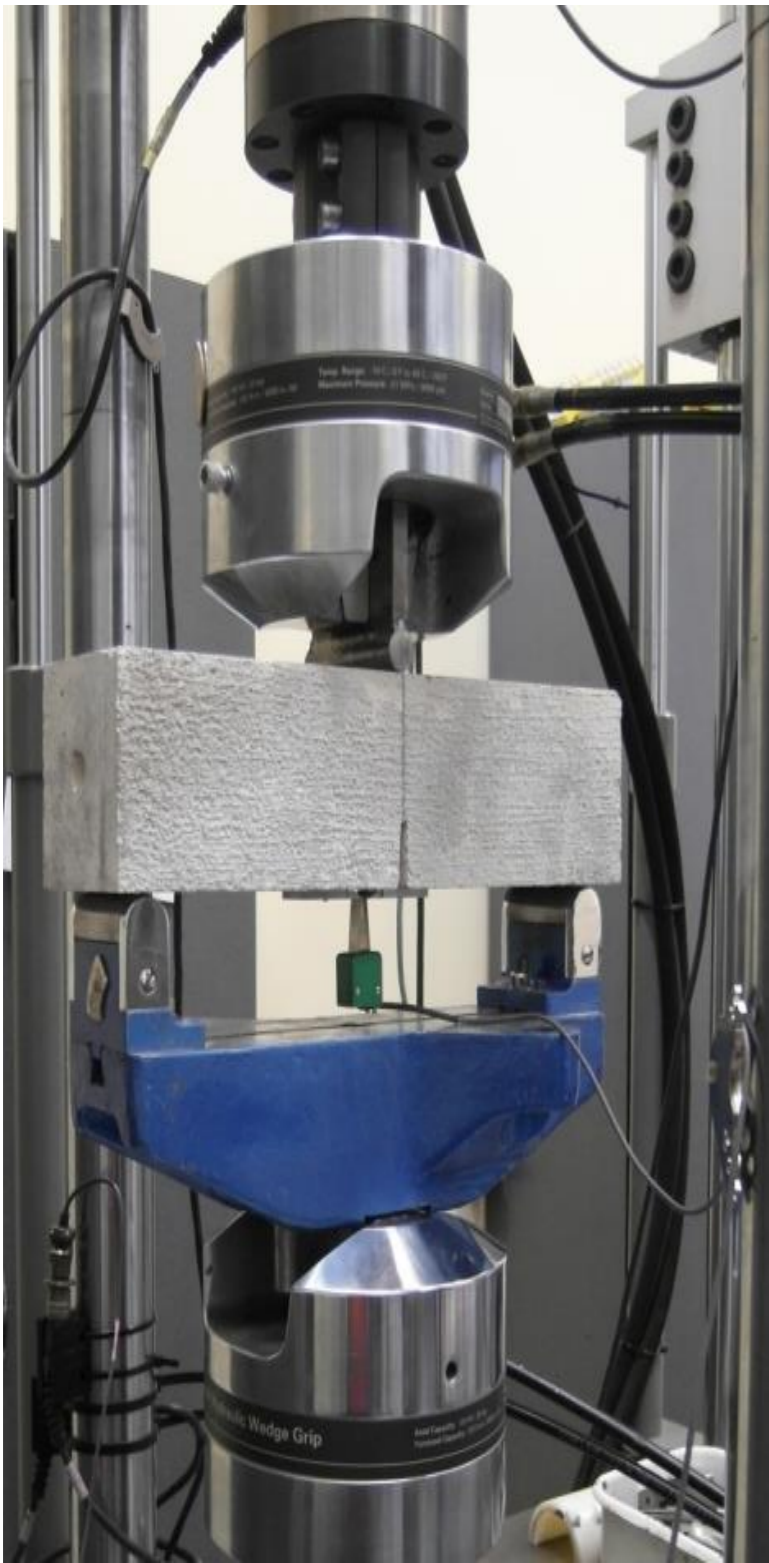
- Computer Systems for Structural Analysis (BSc sem VII)



# DIVISION OF CONCRETE STRUCTURES

## ELECTIVE COURSES

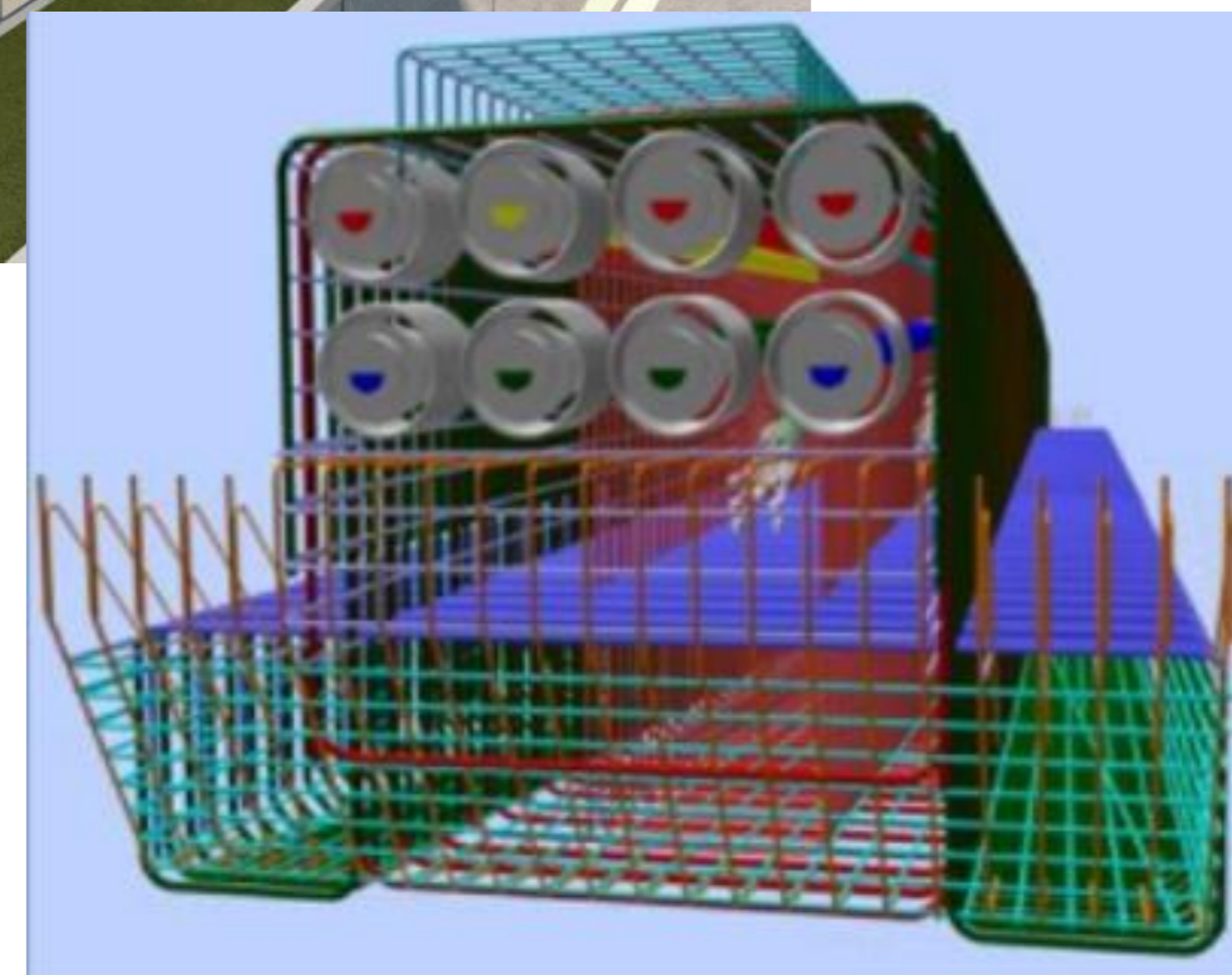
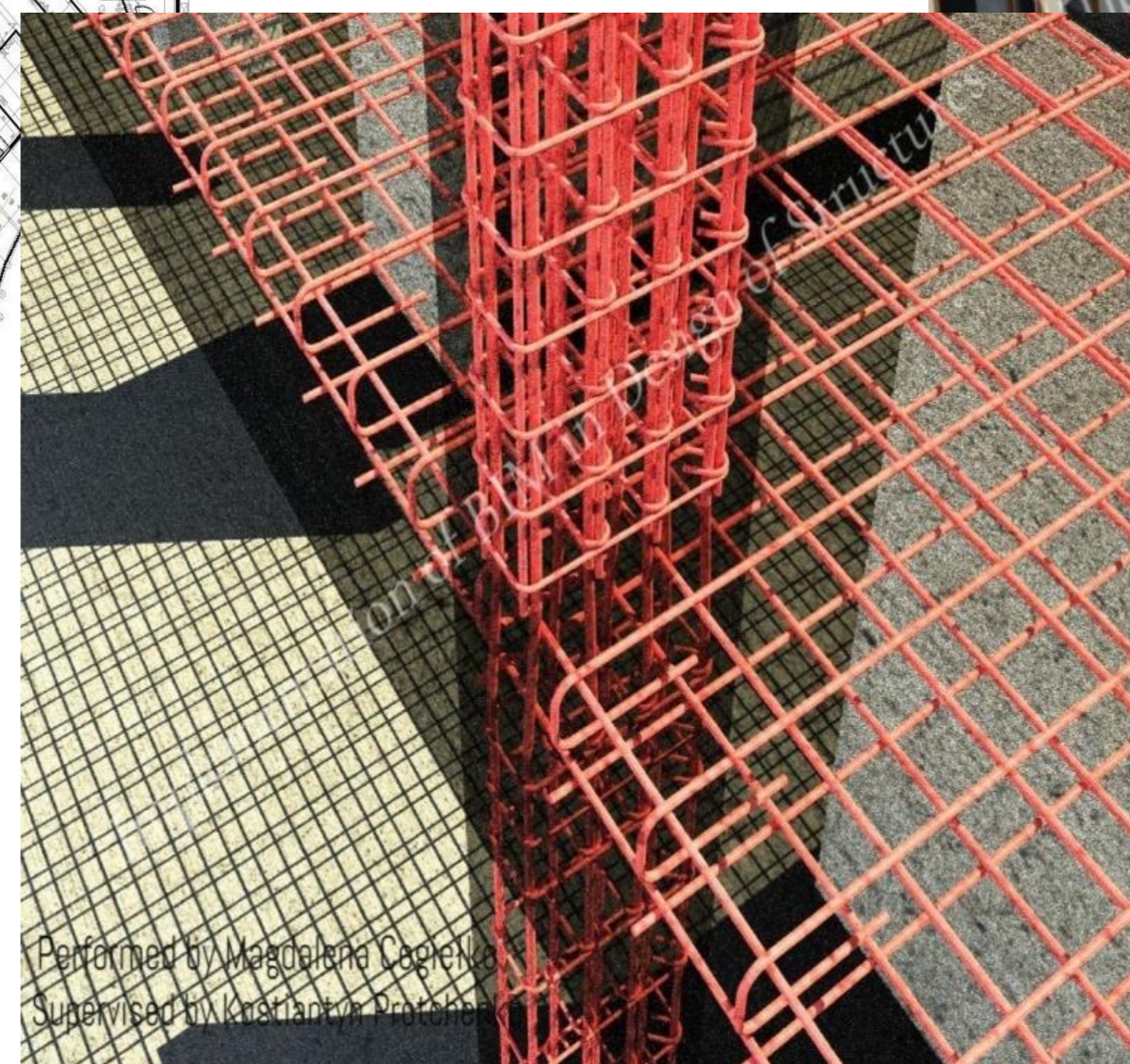
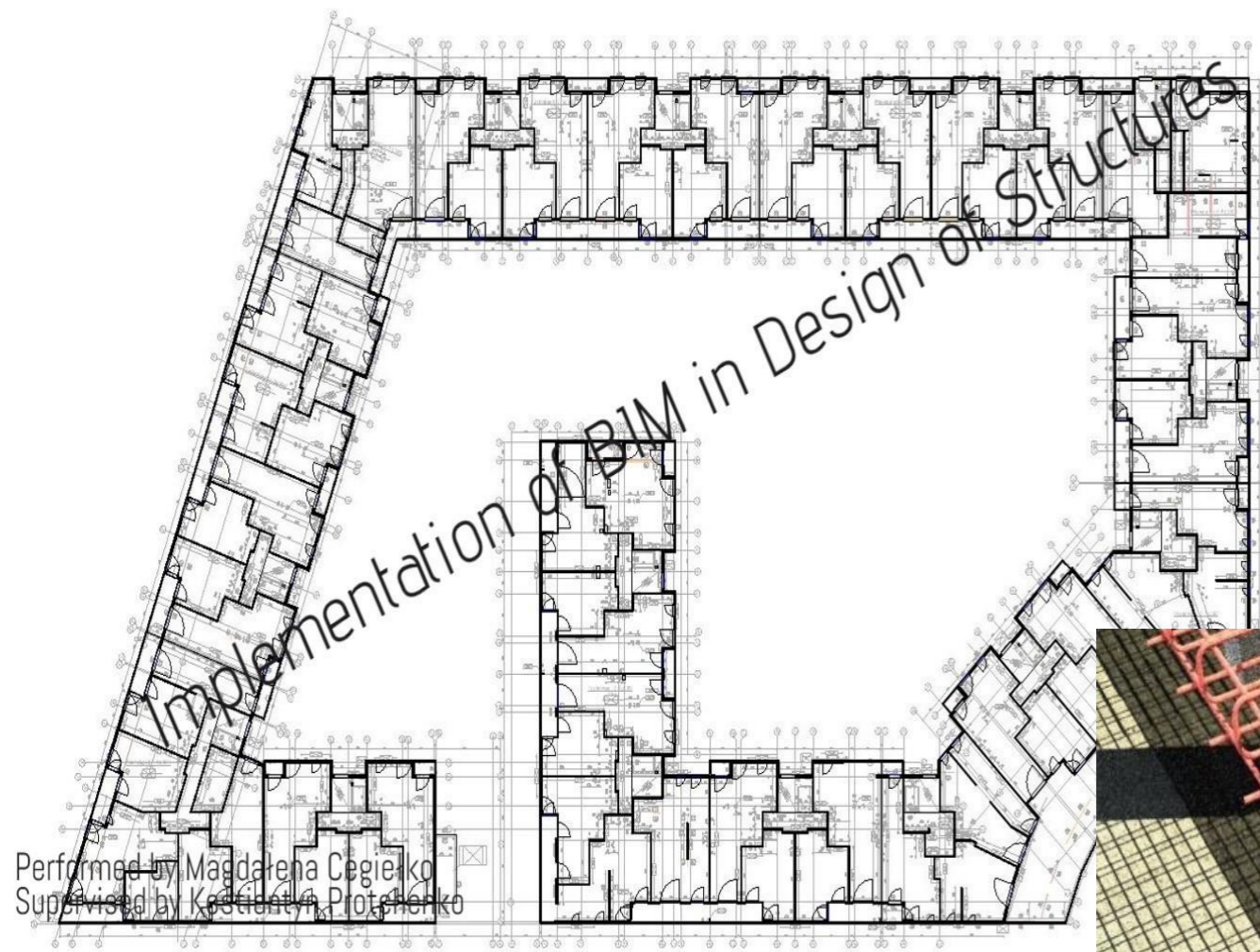
- FRP Composites for RC Structures (BSC sem VII)



# DIVISION OF CONCRETE STRUCTURES

## ELECTIVE COURSES

- Implementation of BIM in Design of Structures (BSc sem VII)
- BIM in Digital Construction (MSc)



# DIVISION OF CONCRETE STRUCTURES

## STUDENT RESEARCH GROUPS

9



Coordinator:  
dr inż. Maria Włodarczyk

**Warsaw University  
of Technology**



Coordinators:  
prof. dr hab. inż. Andrzej Garbacz  
mgr inż. Kostiantyn Protchenko



# DIVISION OF METAL STRUCTURES

## THE SCOPE OF COURSES

- **Metal Structures** (single-storey buildings, multi-storey buildings)



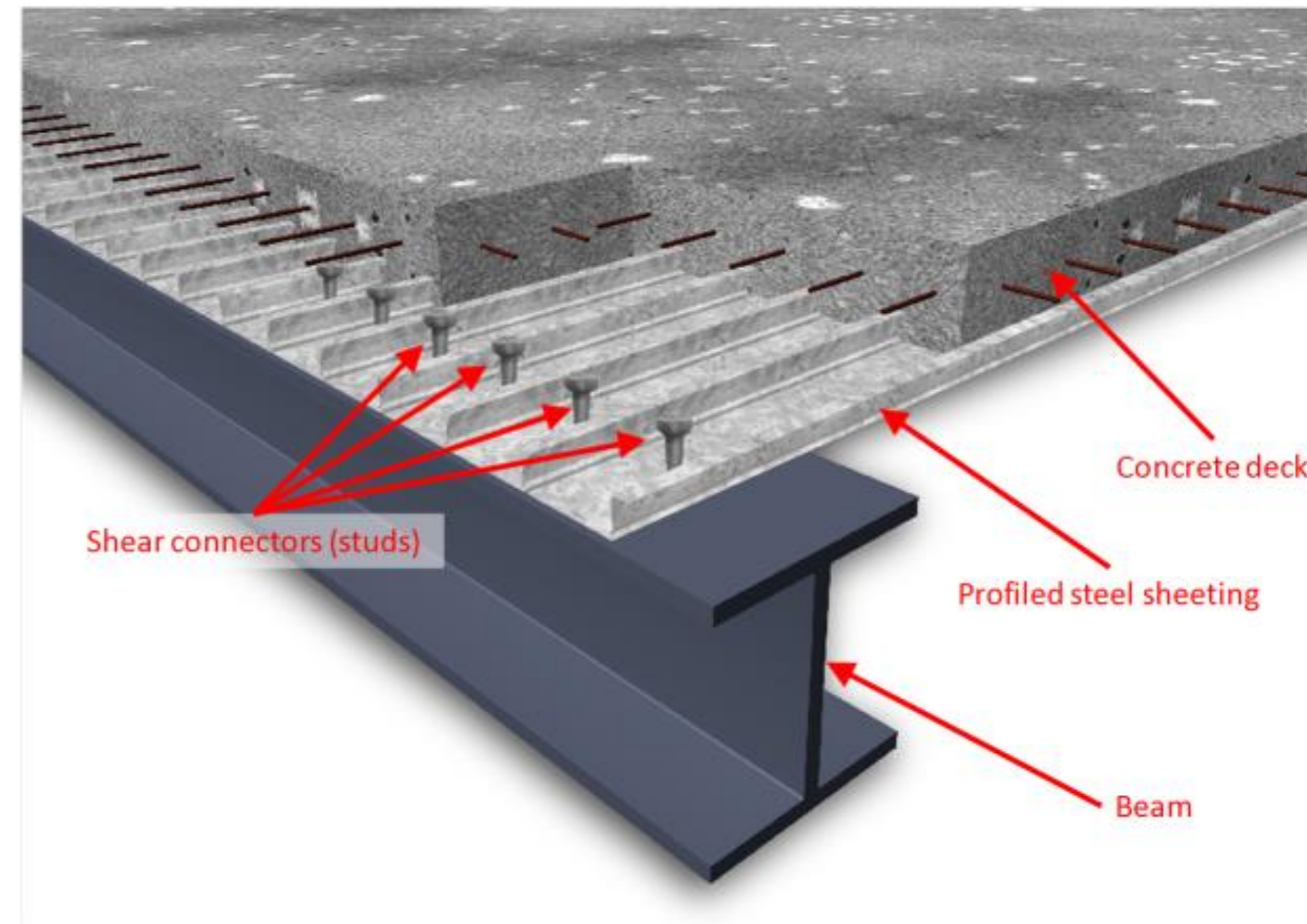
- **Special & Industrial Metal Structures** (tanks, towers, masts, chimneys)



# DIVISION OF METAL STRUCTURES

**NEW** ELECTIVE COURSE

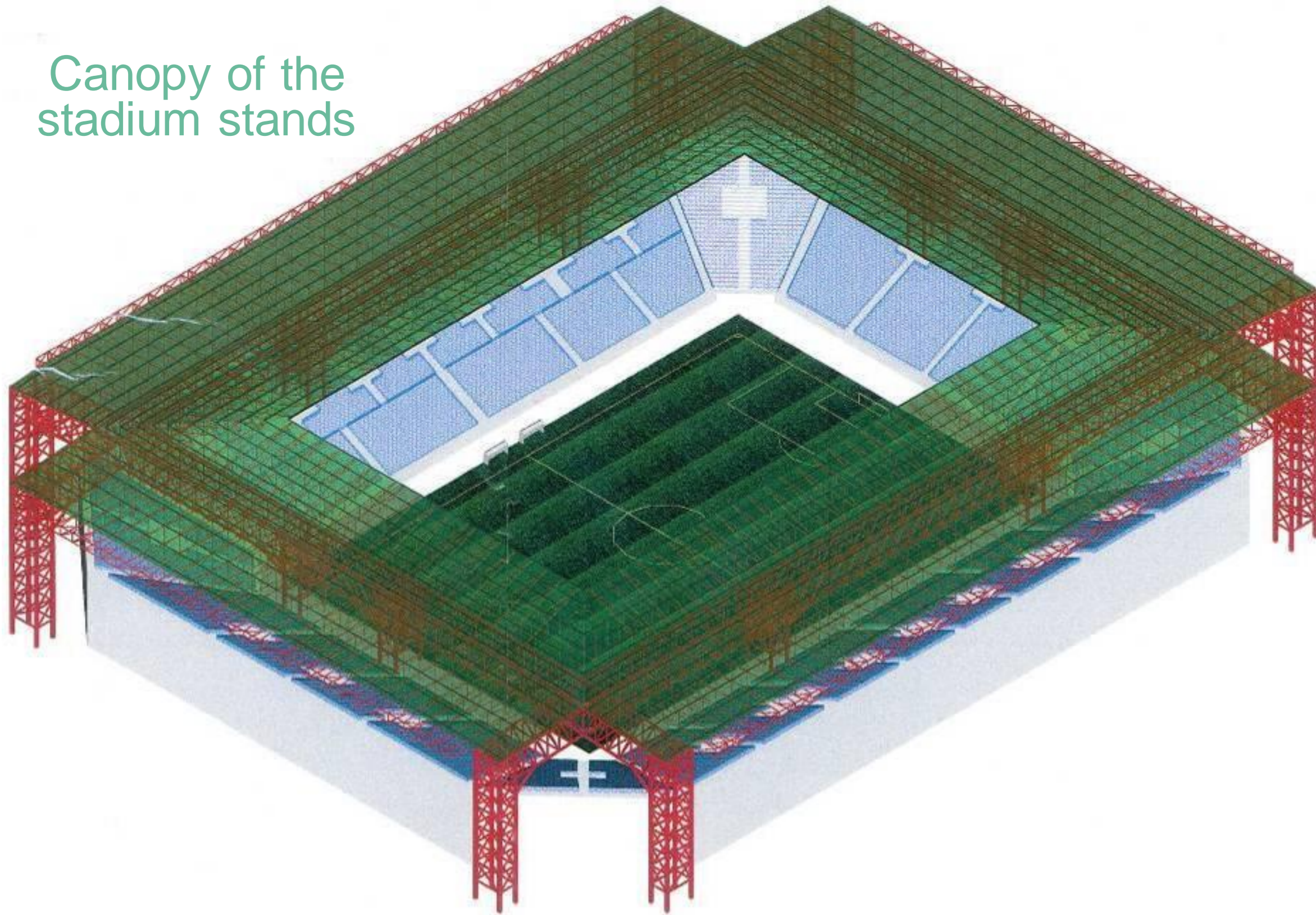
Composite steel-concrete structures



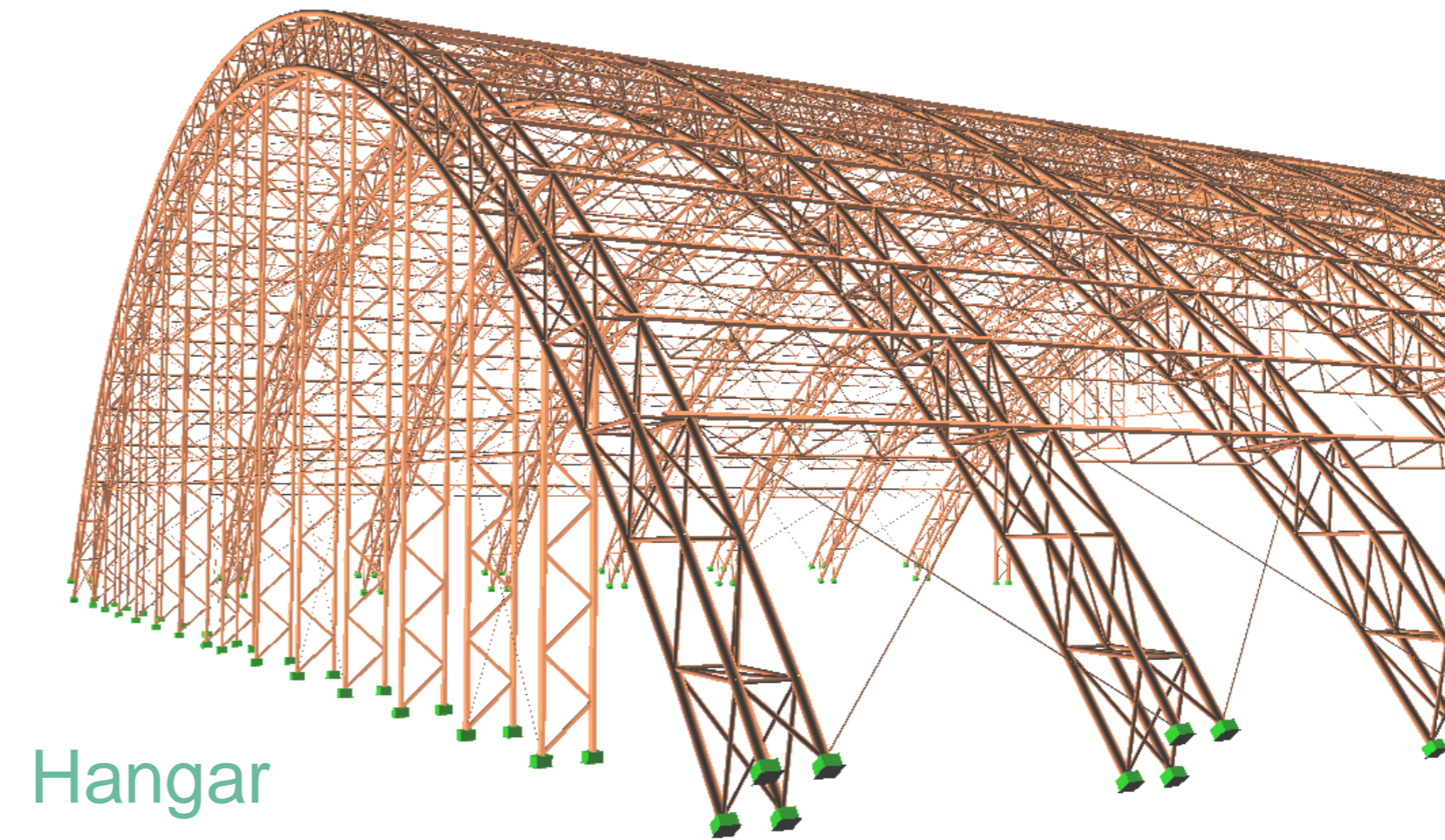
# DIVISION OF METAL STRUCTURES

## THE SCOPE OF DIPLOMA THESES

Canopy of the stadium stands



Warsaw University  
of Technology



Hangar



Office building

12

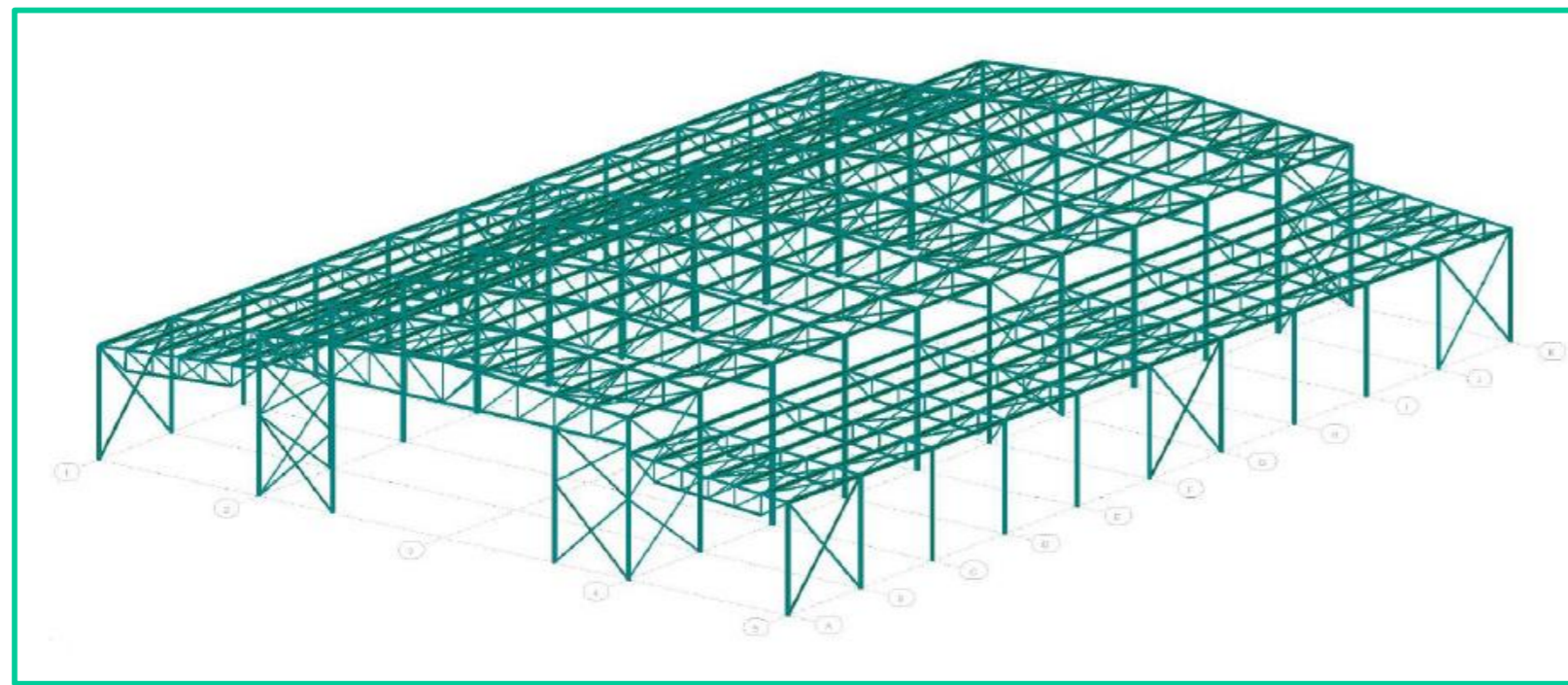
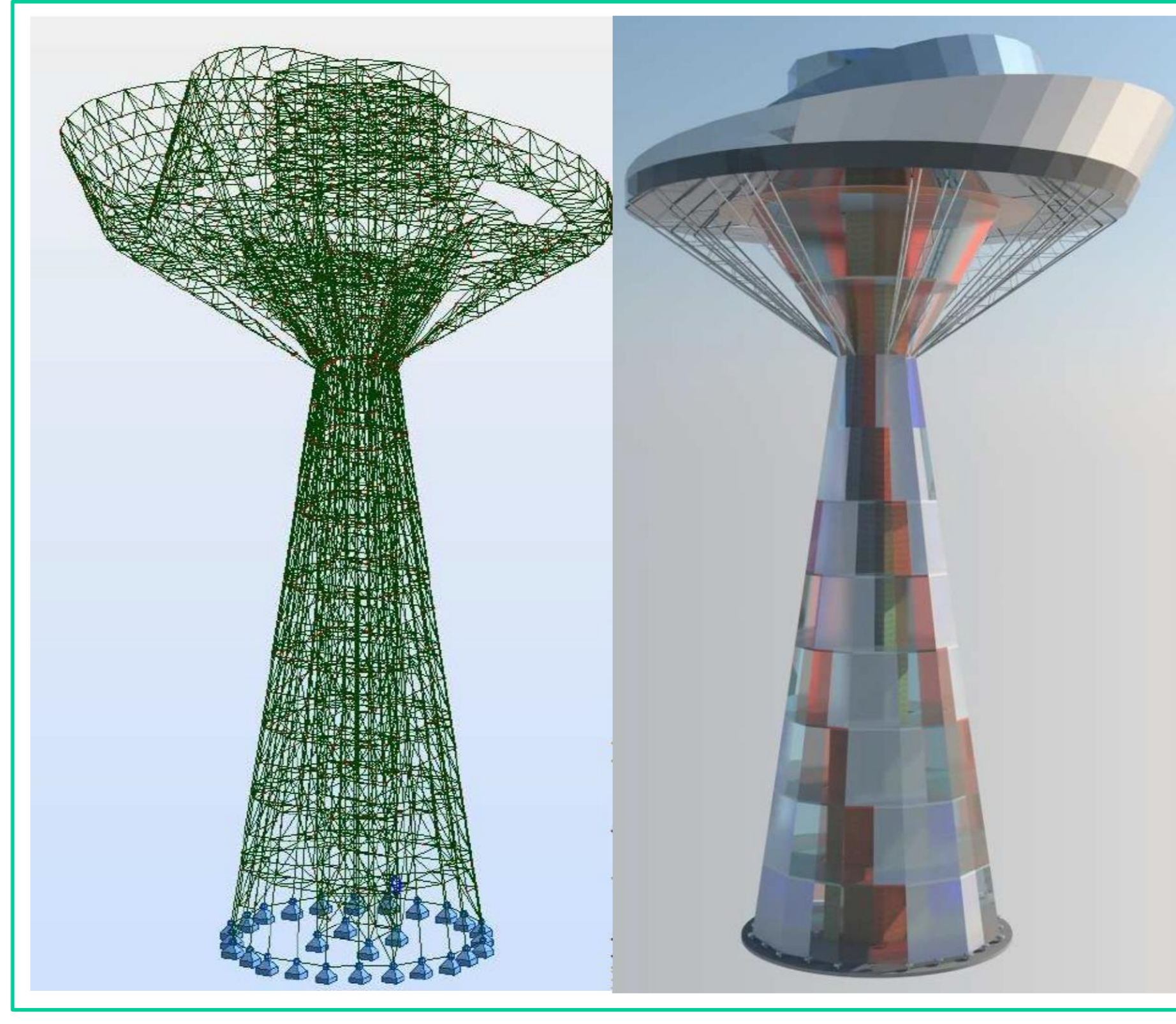
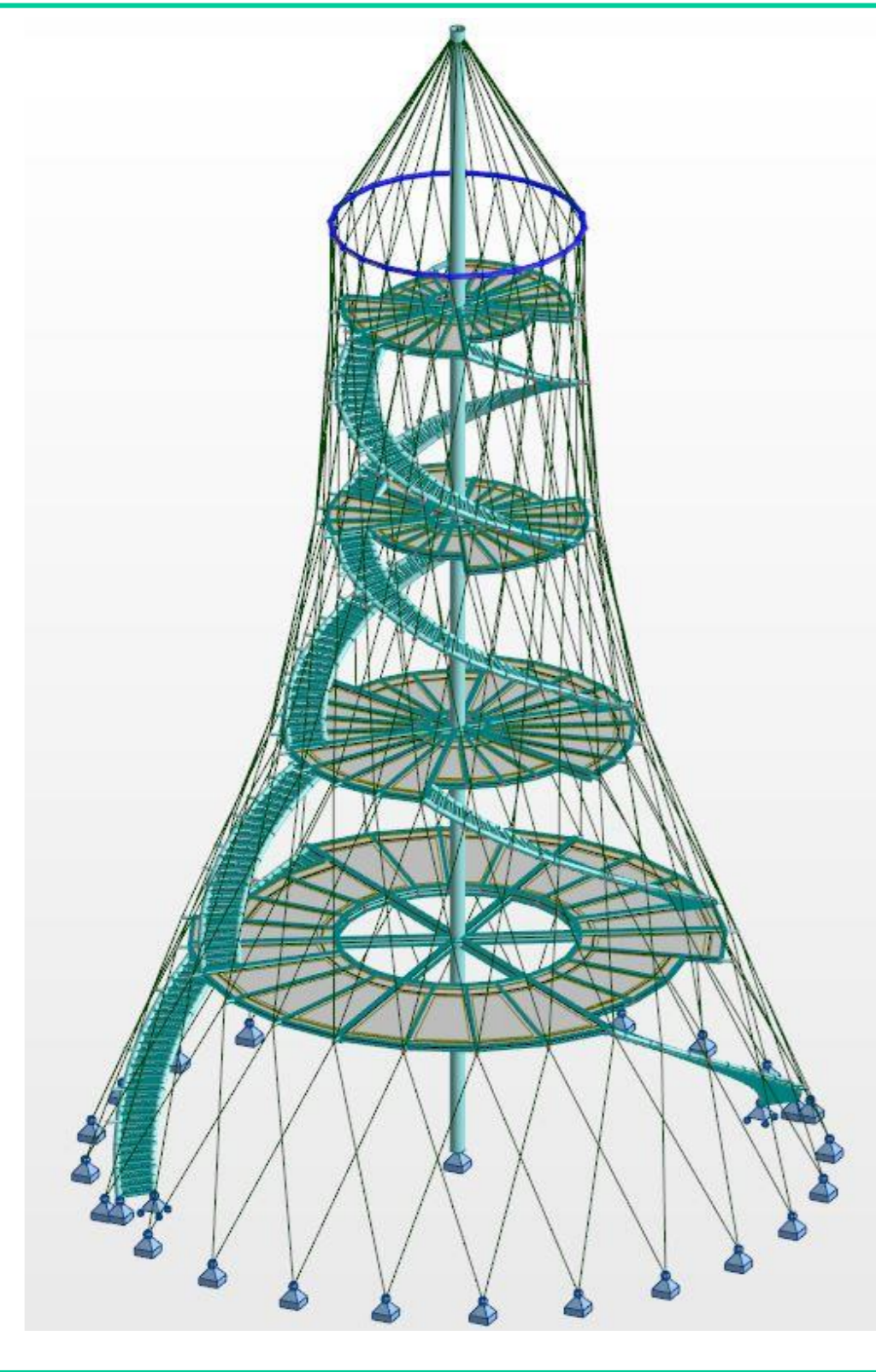


# DIVISION OF METAL STRUCTURES

## THE SCOPE OF DIPLOMA THESES

13

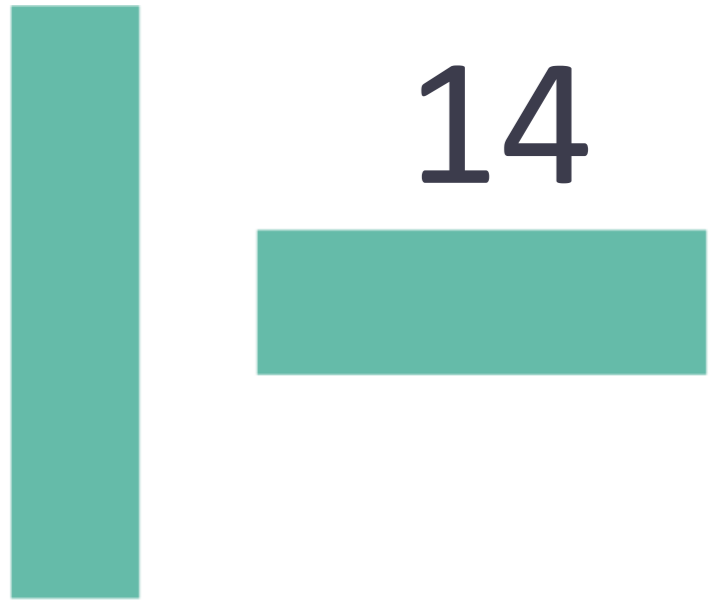
W  
S  
T  
U



# DIVISION OF METAL STRUCTURES

## PARTICIPATION IN EVENTS

Technical trips to fabrication shops, galvanizing plants, and construction site visits



Workshops  
for students,  
seminars,  
and more...



Coordinator:  
Wioleta Barcewicz, PhD, Eng

Warsaw University  
of Technology



The 1st Polish Steel Day in Hotel Sheraton, 2018



The 2nd Polish Steel Day in Hotel Marriott, 2019

# DIVISION OF METAL STRUCTURES

## COOPERATION WITH STUDENT RESEARCH GROUP OF METAL STRUCTURES



POLITECHNIKA WARSZAWSKA

Coordinator:  
Maciej Cwyl, PhD, Eng

Warsaw University  
of Technology



# WHY CES ?

- **Broad theoretical and practical knowledge**
  - reinforced concrete, metal structures, composite structures
  - design, construction, modernisation and repair
- **Interesting BSc and MSc Thesis**
  - many supervisors and a variety of thesis topics
  - creative work and self-development of CES diploma students
- **Many job opportunities**
  - design & construction & supervision
  - office & construction site
  - corporations & small private business
  - research & education





**Faculty of Civil  
Engineering**

WARSAW UNIVERSITY OF TECHNOLOGY

Thank you for your attention.

See you in class!

**Warsaw University  
of Technology**

