



**Faculty of Civil
Engineering**

WARSAW UNIVERSITY OF TECHNOLOGY

Construction Engineering and Management *Diploma Specialization*

**Warsaw University
of Technology**



Construction Engineering and Management

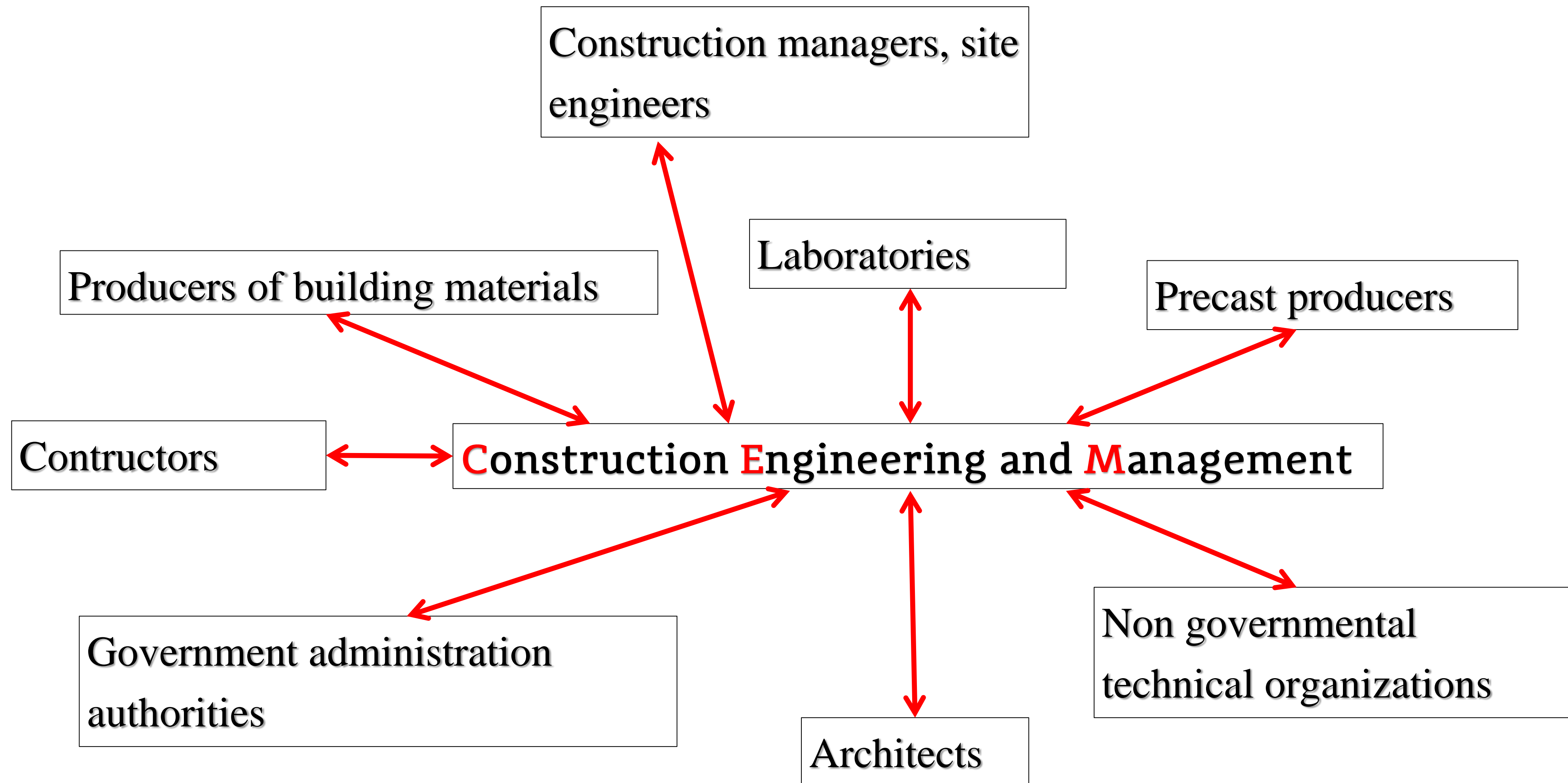
The Department of Building
Materials Engineering (DMBE)

The Department of Production Engineering
and Construction Management (DPECM)

→ The specialty is related and focused primarily
on the broadly understood execution in construction



Professional contacts with the construction industry



Construction Engineering and Management

- Large practical experience
- Number of experts with building licence or construction appraiser licence
- Contacts with the construction society
- Many hundreds of expertise works, expertise opinions, technical papers
- Large number of scientific grants
- Hundreds of scientific papers, many of them in cooperation with our students



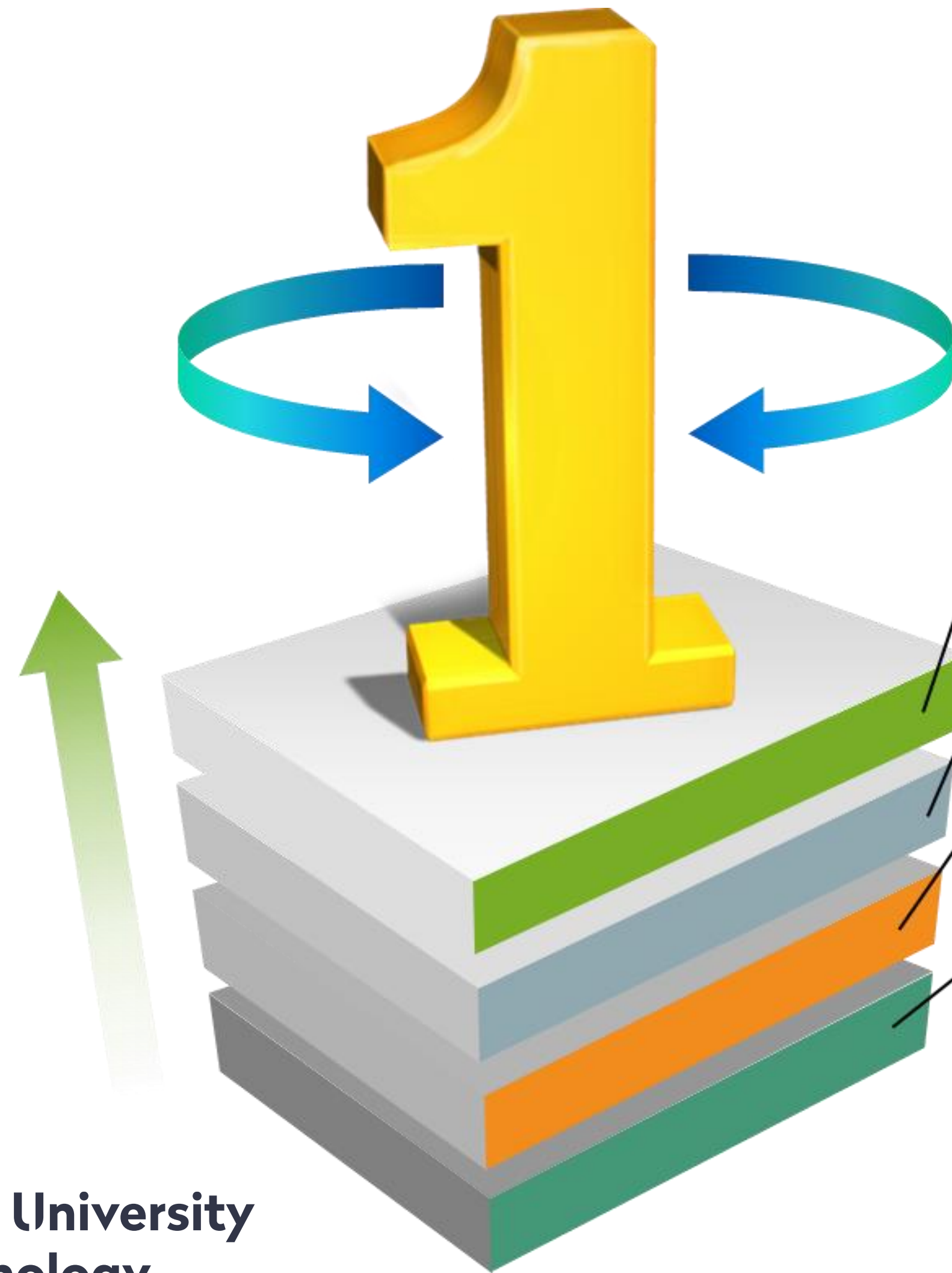
List of specialized subjects

First degree studies:

- Costs and Effectiveness of Investment
- Computer Methods in Management
- Production Processes
- Asphalt Composites Technology
- Mineral Composites Technology
- Polymer Composites Technology
- Selected Technologies of Building Works



Additional opportunities for students in the specialty



- internships and practices in friendly companies
- possibility of foreign scientific exchange
- the opportunity to participate in interesting workshops and training sector
- activities in Student Research Groups



Additional opportunities for students in the specialty

Student Research Groups:

- ❖ Student Research Group of Building Materials Engineering (DMBE)
- ❖ Student Research Group of Project Management in Construction (DPECM)

Scientific exchange with foreign Technical Universities

- ❖ University of Liege (Belgium)
- ❖ University of Michigan College of Engineering (USA)

**Warsaw University
of Technology**



Scope of diploma theses

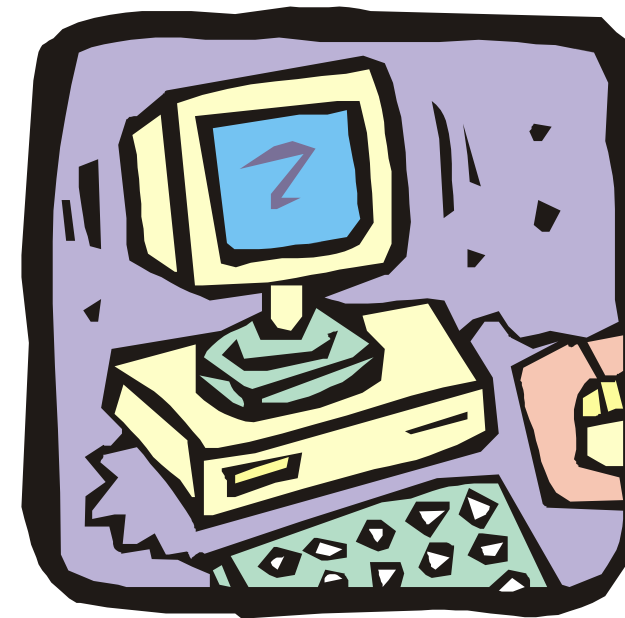
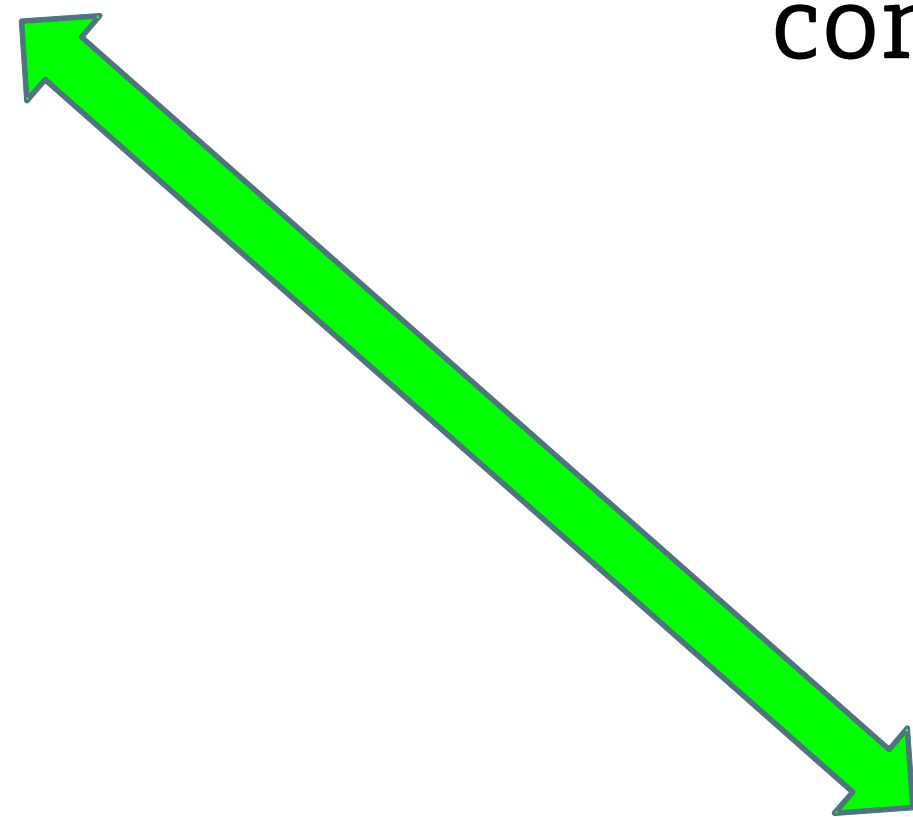
1. Formulation of the research topic and thesis topic

student's interests

contact with employers

the promoter's interests

student predispositions



2. Way of solving the research task

3. Analysis of the state of science and technology

4. Theoretical + practical part of the thesis



Employment prospects

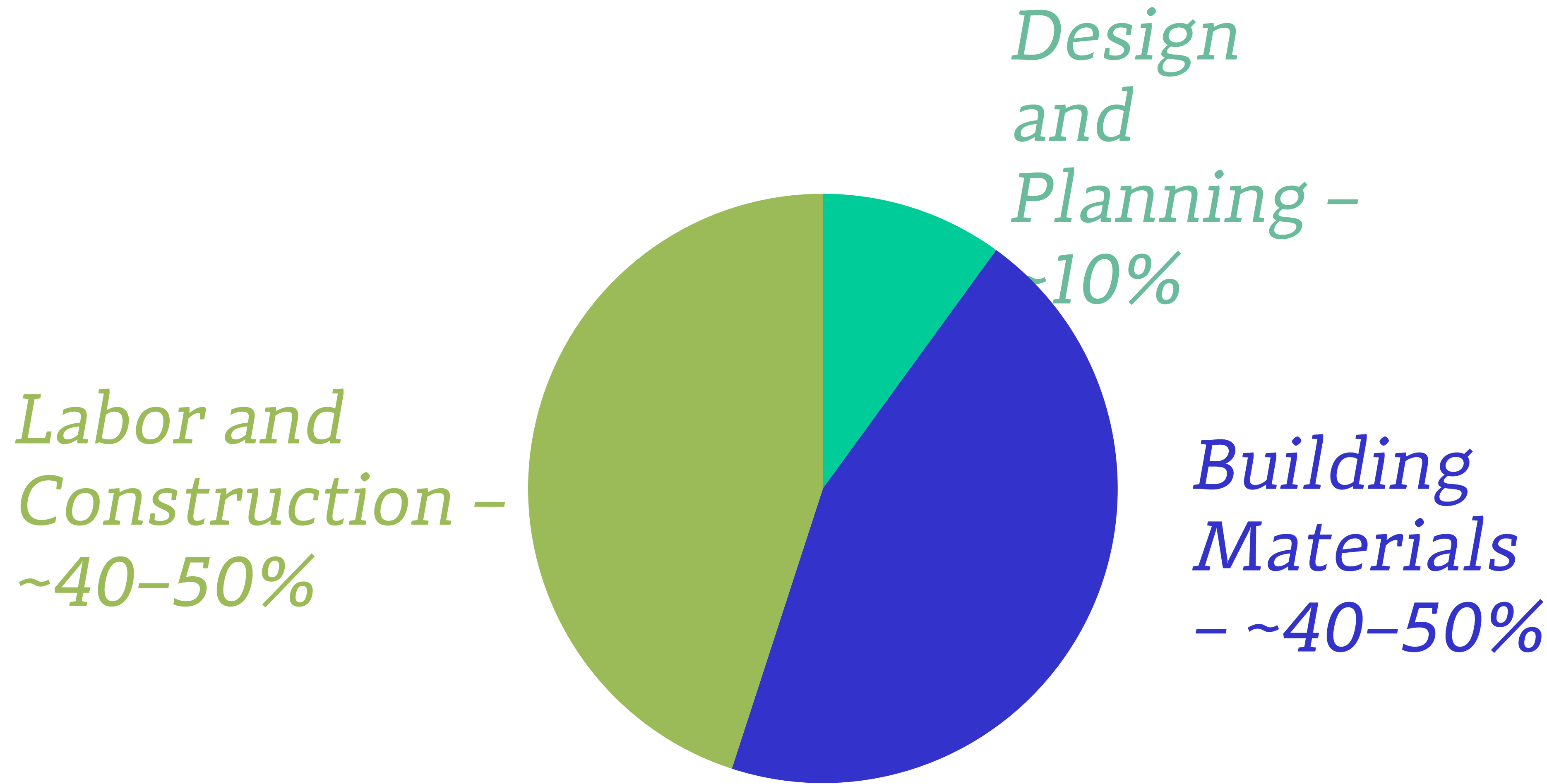
- ✓ on a construction site
- ✓ in a prefabrication plant
- ✓ at laboratory
- ✓ in property management
- ✓ in investment project management in construction, also in banks,
central and local government administration,
- ✓ in governmental agencies
- ✓ The specialty does not exclude job in the design office!



Some employment opportunities after obtaining a diploma in the Construction Engineering and Management Diploma Specialization

Profession	MIN*	OPT**	MAX*
Technical Director	18 000	22 000	30 000
Project Manager	15 000	18 000	30 000
Junior Project Manager	6 000	9 000	12 000
Supervision Inspector	6 000	9 000	12 000
Construction manager (infrastructure)	7 000	14 000	20 000
Construction manager (general construction)	9 000	13 000	16 000
Works Manager	7 000	9 000	13 000
Site engineer	5 000	7 000	7 500
BIM engineer	5 000	8 500	10 000
BIM Coordinator	9 000	12 000	25 000
Specialist of bill of quantities (inf.)	5 000	8 000	12 000
Specialist of bill of quantities (gen. const.)	6 000	7 500	9 000
Construction Designer	6 000	8 000	12 000
Construction Designer Assistant	4 500	5 000	7 000

Where is the Money in Construction?



Resistance to difficult times ..



12





**Faculty of Civil
Engineering**

WARSAW UNIVERSITY OF TECHNOLOGY

Thank you for your attention!

**Warsaw University
of Technology**

